



[www.idealstandard.com](http://www.idealstandard.com)



Choose the right  
**Attitude**



# Attitude

## A fusion of style and innovation

Sensual, minimalist lines treat the eye while a world of innovative functions ensures that water saving, safety and health are optimised. Attitude is pure pleasure, whether your bathroom is for family use or non-residential purposes. Offering superior technology and high-end design, every corner of the bathroom is enhanced to ensure you enjoy maximum pleasure, every single day.



### Design by

**Artefakt industriekultur** was founded in 1989 by Thomas Fiegl and Achim Pohl in cooperation with the international industry. The design team, with up to 12 designers, develops product lines within the overall development process.







# Simple lines, sensual transitions

Enjoy infinite, unbroken lines throughout your entire bathroom. Designed for harmony, Attitude offers no sharp edge, no complicated shape, just a family of sensual, flowing forms to compliment and unite any space.



**From every angle** you'll see nothing but smooth-edged, inviting lines on all handles. Whether on a built-in, basin or bidet, all handles are as pleasant to look at as they are to touch and use.

## design

**Rounded surfaces,** zero sharp angles and edgeless forms make cleaning a breeze. Integrated aerators, seamless wall joins on built-ins and direct wall connections on exposed shower and bath and shower models mean there's no room for any dirt build-up.





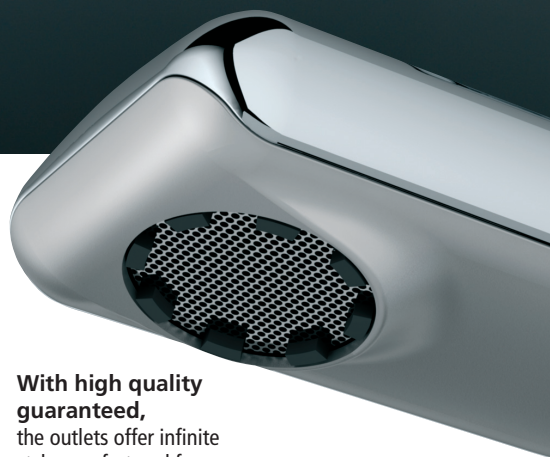
**A clever pull-out diverter**, invisible from the top and harmoniously integrated into the design, is an essential part of the exposed bath and shower model. Easy to clean and offering 100% safety as it stays cool, it is as much a joy to touch as it is to behold.



# Classic...



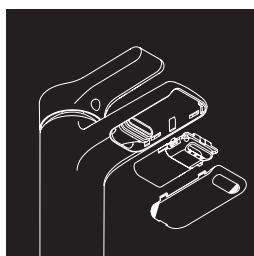
**It's your choice.** All basin, piccolo and vessel fittings are available with either classic or waterfall jets. Whether you prefer the wellness feeling of a spa-inspired waterfall jet or a simply classic sensation, both offer streamlined design with seamless chrome plating and inlays which are invisible from above. For quality and durability these fittings equal a solid brass.



**With high quality guaranteed,** the outlets offer infinite style, comfort and functionality, for long-term enjoyment.

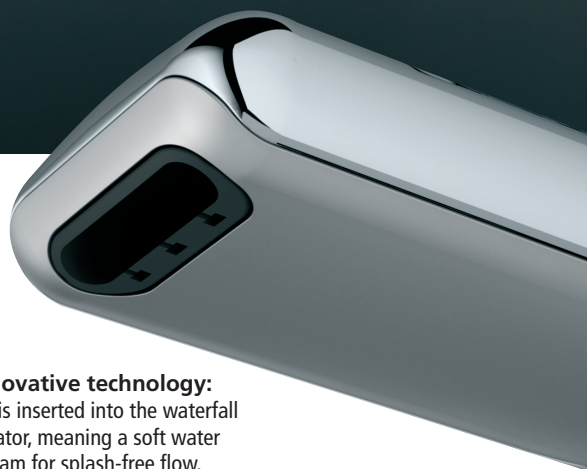


# or Waterfall



**Cleaning the inlay is easy:**  
It simply clicks out without the need for any extra tools, and is simply cleaned in the dishwasher before clicking back in.

Both the Hidden and Waterfall jets are sold separately so you can always switch after installation if you ever feel like a change.



**Innovative technology:**  
Air is inserted into the waterfall aerator, meaning a soft water stream for splash-free flow, even on a high vessel mixer.





# A step forward in health and safety







## Cool Body: Total Safety

**Ingenious Cool Body innovation** means the fitting is always safe to touch. Metal cover technology ensures the mixer surface is 100% sealed for no hot spots and complete peace of mind.

Cool Body is now available not only on bath and shower fittings, but on all Attitude basin, bidet, and vessel mixers. This exciting new benefit prevents against scalding throughout the entire bathroom.



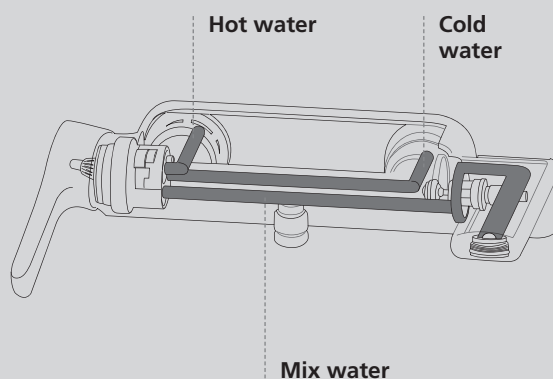
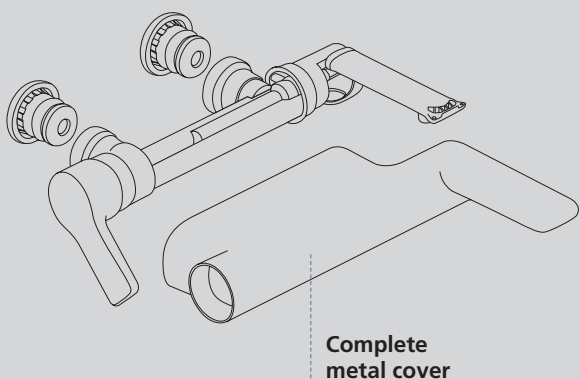
## 100% safe water lines

**Attitude mixers offer** top-quality materials and long-term performance for optimal reliability thanks to 3 innovative features:

> the waterway never touches any nickel surface, so no chrome-plated metal is ever in contact with drinking water (except bidet ball joint)

> copper tubes contain no plating

> EN 1717 protection guarantees against pollution of drinking water (back-flow prevention in water installations) for all of Europe.



Cool Body  
Technology

# innovation



5-year guarantee

# innovation



# Everyday water and energy saving

Save precious water while adding a touch of streamlined elegance to your bathroom. Each Attitude product is equipped with a clever water-saving device. Top-quality materials and workmanship come together to create masterpieces of practicality and reliability which are also thoughtfully economical.



## Safe, ecological and economical,

The waterfall fittings are also equipped with a multi-port cartridge offering a safe hot water stop which limits the hot-water waste. A flow limiter reduces extensive waste of water.



## Click Technology

The Click technology with the regular mixers gives you a 50% water-saving device on top to help control how much water you use so you can enjoy precise and comfortable temperature control at any time.

# innovation









## Built-in models

The built-in may be easy to install but it also offers many other advantages: it takes up very little room, is easy to clean as there are no visible fixing screws, and offers the durability of an attractive metal handle and escutcheons.

## functionality

### 7 steps for a perfect fit:

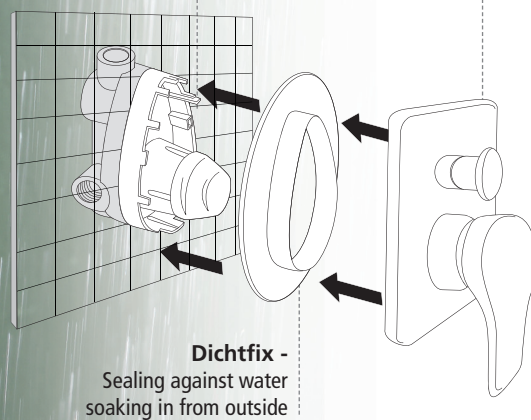
- 1 > connect feeding and sewage pipes
- 2 > fix the sealing frame
- 3 > remove the plaster template
- 4 > reduce the sealing frame to correct length
- 5 > mount the cap and the reversing sleeve
- 6 > mount the carrier
- 7 > install the visible parts...

It is ready and 100% safe!



Additional  
sealing inside

Metal  
plate



**Dichtfix -**  
Sealing against water  
soaking in from outside



### 100% Safety guaranteed

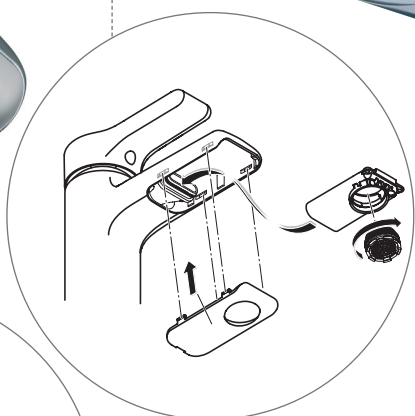
All built-in models are equipped with the universal UP Body DICHTFIX. Tested and approved, it offers 100% safety guarantee of installation with no risk of soaking behind. Ideal Standard guarantees only the highest performance, comfort and quality for all its shower and bath and shower models.

## innovation

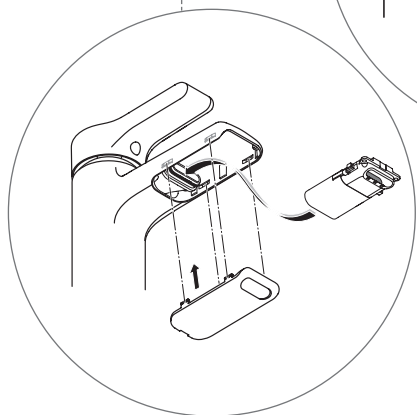


# High performance Aerator

As good-looking as they are practical, these aerators offer long-lasting quality and are vandal-proof, so particularly suitable for public areas.



Hidden aerator

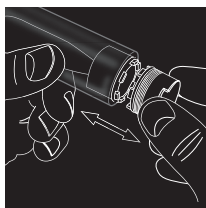


Waterfall aerator



**Whether Caché or Waterfall**, these concealed stream regulators, with their unique construction, slow down lime build up. Even after being subjected to an accelerated aging procedure, these high quality aerators have been shown to produce a clean, splash-free water stream. Spouts have no visible gap at the end for a slick finish and easier cleaning.

functionality



**Easy assembly and replacement:** to replace your old aerator, simply use the service key or the spare aerator to exchange the assembled one.



# Simple to use, easy to install



Equipped with the most advanced Ideal Standard innovations, the Attitude range offers outstanding quality and functionality. Not only practical and economical, it is also a breeze to install.

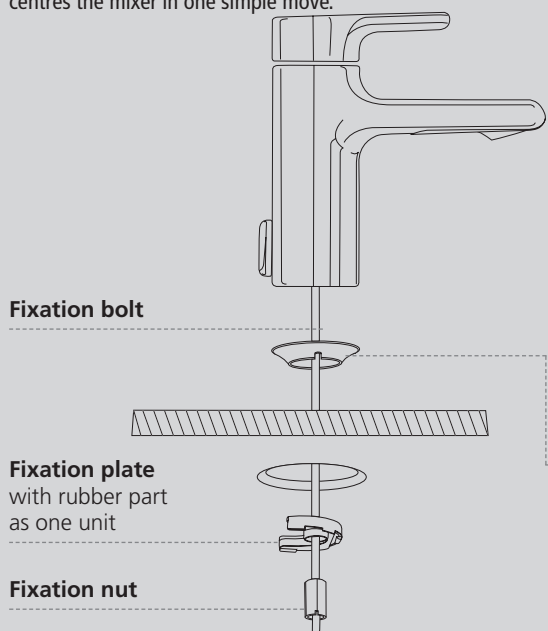
## functionality

The difficulty of centring a mixer in the tap hole of a basin is familiar to any plumber. It is time consuming and costly. The Easy Fix system uses a single stainless steel bolt both to secure and centre the mixer automatically, in one swift move. All components come pre-installed – so no work is required.



### Easy-Fix System

The fixation plate and rubber part form one unit. A single stainless steel bolt automatically secures and centres the mixer in one simple move.



Bolt + Soft fixation plate + Nut guarantee a easy and reliable fixation. Soft fixation plate avoids damages on basins e.g. glass basins (glass bowls).

### Rubber centring and sealing ring

The centre seal means easy alignment and maximum sealing to prevent risk of leaks. For optimal reliability, every day.





# A harmonious Attitude

## Imagine

Design, modularity and invention are the essential components of Imagine. Many clever features, new design elements as the peninsula, a choice of two materials, four colours and three silk-screen designs... provide infinite choice and absolute comfort. Spaces remodelled; usage reconsidered, access facilitated... this is pleasure reinvented.

**Designed by Ronen Joseph**



## SimplyU

4 Cutting edge designs meet outstanding innovation and functionality to create a comprehensive range offering the ultimate in beauty, comfort and ease-of-use. A modular concept with exciting new styles and an innovative consumer-oriented approach which empowers you to create your own unique bathroom.

**Designed by Artefakt**

## Senses

Senses is a range of practical and attractive shower kits. Offering supreme sensations of well-being, it contains an array of different jet options including hydromassage amongst a host of exciting features. Pure lines and exceptional quality make Senses the perfect shower range to complement your bathroom.

**Designed by Artefakt**



## First

With an ingenious system of evacuation, the First bath range offers greater safety and easier access with 10cm lower walls. Available in three shapes and several different sizes, its lower, streamlined form opens out the space in your bathroom, for greater relaxation and an enhanced experience.

**Designed by Marc Sadler**

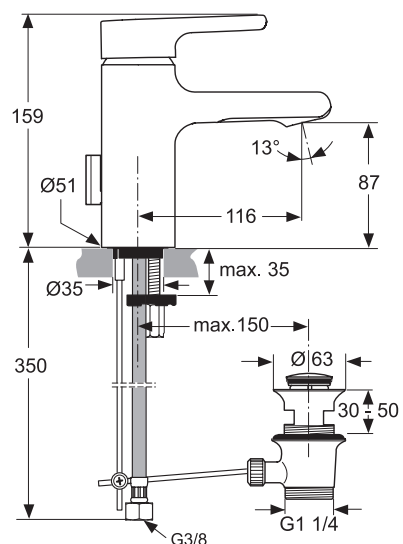


# Attitude



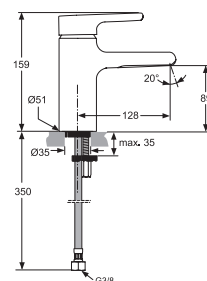
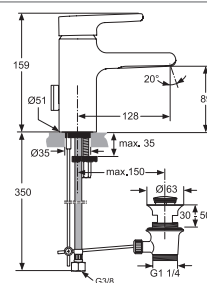
**1 hole basin mixer, flexible hoses, with pop-up waste, aerator spout**  
 Zink die cast body  
 Multiport cartridge with click  
 Removable inlay with click fixation  
 mechanism and without using special  
 tools  
 Aerator Cache-CC-STD-A M24X1  
 Easy fix  
 Flexible hoses M8x1 - G3/8" nut  
 connection  
 Metal pop-up waste

**A4594AA**  
**A4595AA** Without pop-up waste  
**A4591AA** With CU-tubes for water  
 supply connection



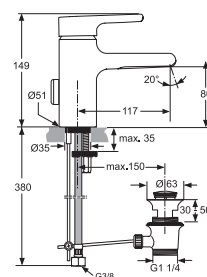
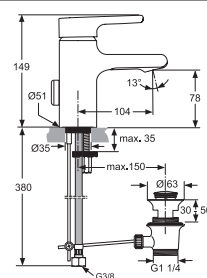
**1 hole basin mixer, flexible hoses, with pop-up waste, waterfall spout**  
 Zink die cast body  
 Multiport cartridge with click  
 Removable inlay with click fixation  
 mechanism and without using special  
 tools  
 Waterfall aerator  
 Easy fix  
 Metal pop-up waste

**A4598AA**  
**A4599AA** Without pop-up waste  
**A4596AA** With CU-tubes for water  
 supply connection



**1 hole piccolo basin mixer, flexible hoses, with pop-up waste, aerator spout**  
 Zink die cast body  
 Multiport cartridge with click  
 Removable inlay with click fixation  
 mechanism and without using special  
 tools  
 Aerator Cache-CC-STD-A M24X1  
 Easy fix  
 Flexible hoses M8x1 - G3/8" nut  
 connection  
 Metal pop-up waste

**A4753AA**  
**A4754AA** With waterfall spout





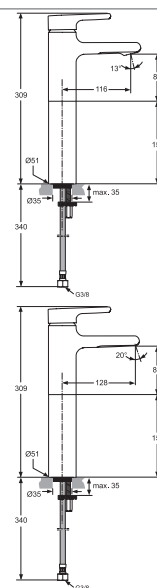


**1 hole vessel mixer, flexible hoses, without pop-up waste, aerator spout**

Zink die cast basin body with zink die cast extension piece  
 Chrome plated cap to cover the waste hole in the body  
 Multiport cartridge with click  
 Removable inlay with click fixation mechanism and without using special tools  
 Aerator Cache-CC-STD-A M24X1  
 Easy fix  
 Flexible hoses M8x1 - G3/8" nut connection

**A4600AA**

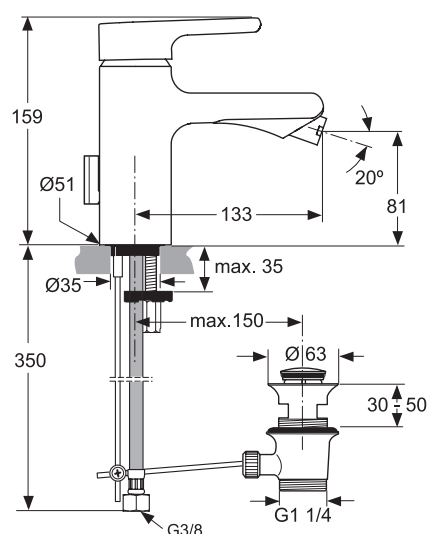
**A4601AA** With waterfall spout



**1 hole bidet mixer, flexible hoses, with pop-up waste**

Zink die cast body  
 Multiport cartridge with click  
 Removable inlay with click fixation mechanism and without using special tools  
 Ball-joint aerator Cascade M18x1  
 Easy fix  
 Flexible hoses M8x1 - G3/8" nut connection  
 Metal pop-up waste

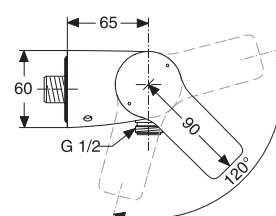
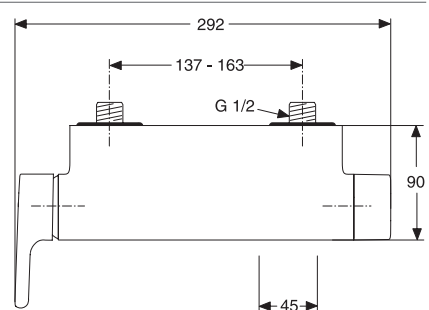
**A4602AA**



**Shower exposed mixer without accessories**

Zink die cast body with covered nuts and S-connectors  
 Integrated check valve  
 Multiport cartridge with click  
 Shower outlet: G 1/2" hose connection (for accessories) on right side of the body  
 Chromed cap to cover the hole in the middle on bottom side of body

**A4603AA**





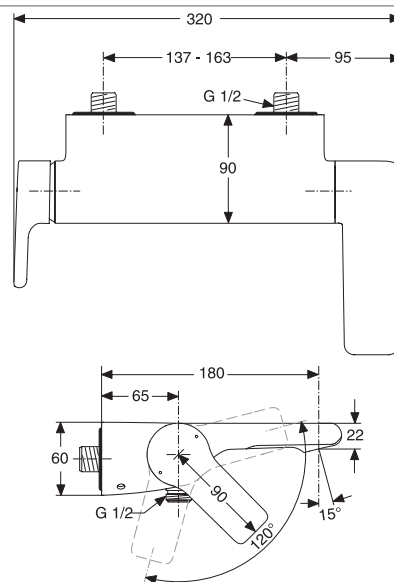
# Attitude



## Bath/Shower exposed mixer without accessories

Zink die cast body with covered nuts and S-connectors  
Integrated check valve  
Multiport cartridge with click  
Shower outlet: G 1/2" hose connection (for accessories) integrated in the body  
Automatic pull diverter integrated in the spout  
Aerator class C  
Clear indication for the diverter function

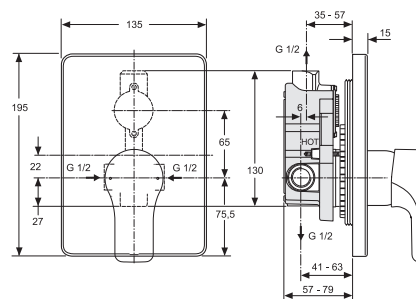
**A4604AA**



## Shower built-in mixer kit 2

47 mm SL cartridge with click  
Invisible fixation of the escutcheon (for use with universal kit 1 A2650NU)  
Noise reducer

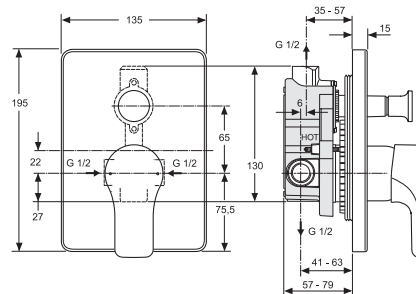
**A4606AA**



## Bath/Shower built-in mixer kit 2

47 mm SL cartridge with click  
Automatic pull diverter  
Invisible fixation of the escutcheon (for use with universal kit 1 A2650NU)  
Noise reducer

**A4607AA**



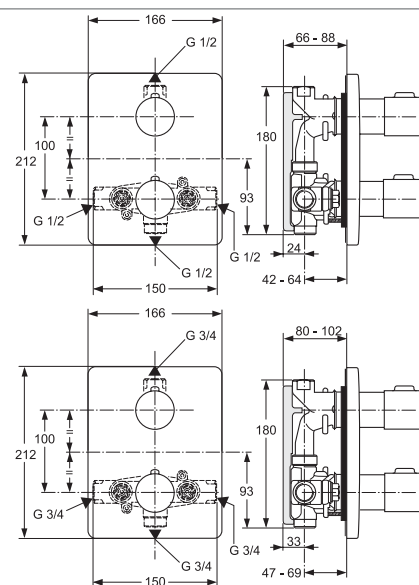




### Individual thermostatic built-in mixer KIT2

Volume control handle  
Temperature control handle  
Improved thermostatic cartridge  
Override function (at 40°)  
Eco function  
For combination with A2353NU KIT1  
(internal part)

**A4613AA**



### Spare Parts

Inlay with Classic aerator (M24x1)  
**A960692NU**

Inlay with Waterfall Aerator  
**A960687NU**



